

A

B

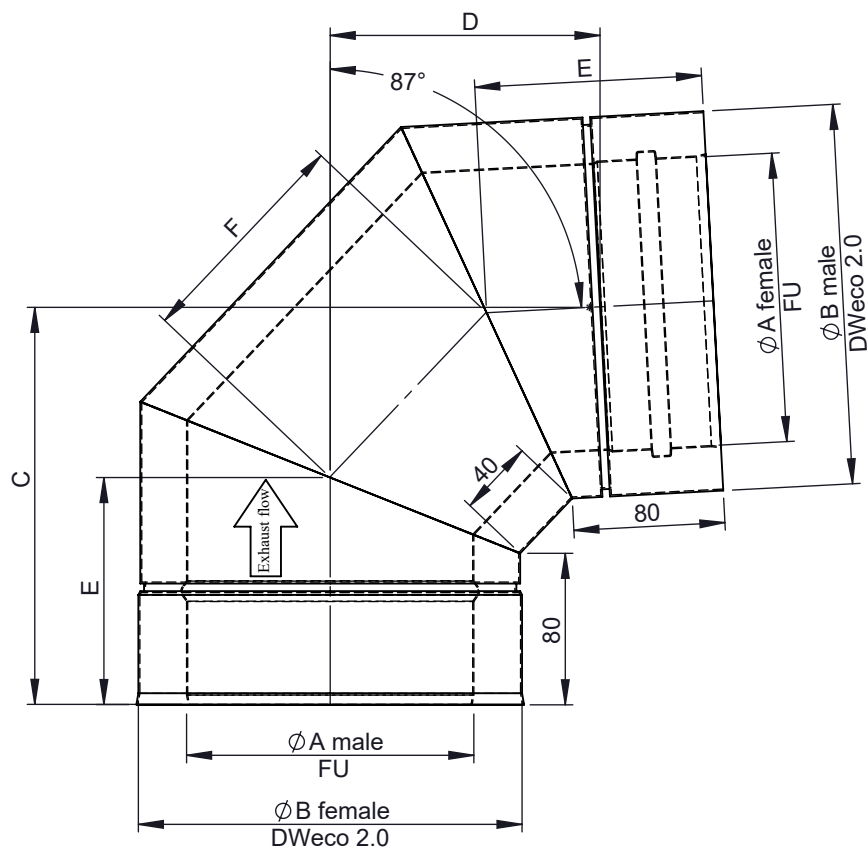
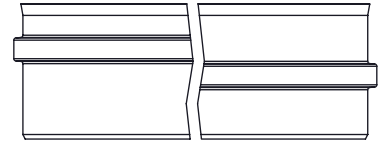
C

D

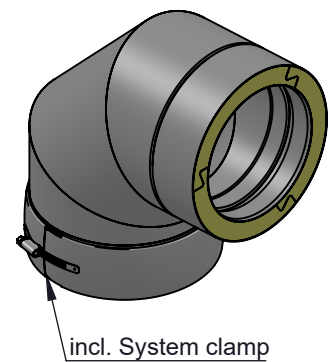
E

F

Possible type of female part "FU"



1:10 (150)



\varnothing	80	100	115	120	130	150	160	180	200	225	250	300	350	400	450	500	550	600
A	80	100	115	120	130	150	160	180	200	225	250	300	350	400	450	500	550	600
B	130	150	165	170	180	200	210	230	250	275	300	350	400	450	500	550	600	650
C	175	186	193	195	201	210	215	225	235	248	260	285	310	335	360	385	410	435
D	110	119	126	129	133	143	147	157	166	178	190	214	237	261	285	309	332	356
E	106	110	113	114	116	120	122	126	130	135	140	150	160	170	180	190	200	210
F	92	101	106	108	112	120	124	132	140	150	160	180	200	220	240	260	280	300
kg	1,57	1,95	2,23	2,33	2,55	2,98	3,21	3,68	4,19	4,87	5,58	7,14	9,78	11,89	14,2	16,7	19,39	22,28

notes:
ENCD

DIN ISO 13920 Tolerances B

revisions-no.

A1

mm / kg

date

name

drawn by

06.11.19

JMA

checked by

06.11.19

SWA

approved by

06.11.19

JWY

modified by

CHIMNEY SYSTEMS

description Elbow 87°

code 215-DWECO64

drawing-no. 02-35-6200-205

scale

1:4

format

A4

sheet

1 of 1

